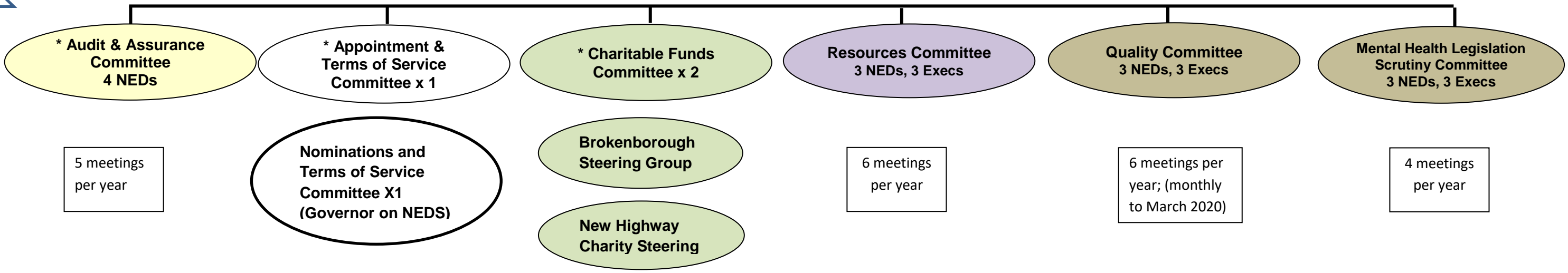


Trust Board: Frequency - 6 public & 6 private; Development Sessions x 6



DECISION MAKING FLOW

Focus

Provides the Board with a means of independent and objective review of financial and corporate governance, assurance processes and risk management across the whole of the Trust's activities both generally and in support of the Annual Governance Statement.

Internal audit function, external auditors

Counter fraud

Oversight Risk Register and Board Assurance Framework

Chair – Marcia Gallagher

Members – Maria Bond, Duncan Graham, Graham Russell

Lead – Head of Corporate Governance

Regular attender: and Dir Finance

Focus

Appointments

Remuneration, performance and terms of service for the Chief Executive and Executive Directors (including termination)

Chair: Trust Chair

Members – all NEDS

Supporting Execs – CEO

DIR HR

Nominations

Appointment, remuneration, performance and terms of service for the Non-Executive Directors (including termination)

Chair: Board Chair

Members – Governor led

Focus

Acts as the governing body of the Trust charity, and ensures on behalf of the Board of Trustees that charitable funds are managed in accordance with charity law and the wishes of donors. Has delegated authority from the Board of Trustees.

£50k GCS, £50k 2g

Chair: Marcia Gallagher

Brokenborough

Link: Great Western

New Highways

Chair – NED

Members all Board (core of 3)

Lead Exec – Director of Strategy & Partnerships

Focus

Ensure relevant Strategies are in place, ensuring the Trust has an appropriate:

- Workforce Strategy
- Finance Strategy
- Estates Strategy
- IM&T (Information Management and Technology) Strategy
- Communication and Engagement Strategy

Undertake high-level, exception based monitoring of the delivery of workforce and financial performance to ensure that the Trust is operating in line with its annual plan objectives

Chair: Graham Russell

Members – Sumita Hutchison, (GP NED), Duncan Sutherland, Dir HR and Dir Finance, (+Chief Operating Officer)

Lead Exec: Dir HR and Dir Finance

Focus

Ensures Trust establishes, monitors and maintains appropriate integrated systems, processes and reporting arrangements for the management of all aspects of clinical governance, patient safety and risk and performance

Reviews patient safety, service experience and serious incident data, monitors regulatory compliance,

Chair: Maria Bond

Members – Sumita Hutchison, Jan Marriot, Dir Nursing, Therapies & Quality, Medical Director, Chief Operating Officer

Lead Exec: Dir Nursing, Therapies & Quality

Focus

Ensures Trust establishes, monitors and maintains appropriate integrated systems, processes and reporting arrangements to ensure continued compliance with the Mental Health Act, Mental Capacity Act and Human Rights Act and associated codes of practice.

Receives findings from Mental Health Act Commissioner visits, reviews legal issues and developments, and oversees MHS Managers' recruitment, training and performance.

Chair: Jan Marriot

Members – Maria Bond, Graham Russell, (+1), Chief Operating Officer, Medical Director (+1)

Lead Exec: Chief Operating Officer

Executive Team (Frequency fortnightly)

Issues of significant expenditure or policy or strategy change, or where a Quality Equality Impact Assessment is required are taken forward to the Executive. Where the final decision is above the authority of the Executive, or is of strategic significance the issue is taken to the relevant Committee and if necessary the Board.